

Out-of-bed mobilisation

Whether the patient is ventilated or not, the process of sitting a patient on the edge of the bed forms an important part of the early patient assessment and subsequent provision of a structured rehabilitation programme and seating plan. This process provides vital information with regard to patients' sitting balance and readiness for sitting out of bed and their physiological stability in response to activity and positional change, as well as many other specific physical and psychological benefits.

Once sitting balance and physiological reserve have been determined, an individualised seating programme can be devised to aid recovery. In the early stages this may require specialist equipment and a range of early mobility solutions are available to support this process at all stages.

References

35. McWilliams, D.J., Westlake, E.V., Griffiths, R.D. Weakness on the Intensive Care Unit – Current Therapies. *British Journal of Intensive Care*. 2011 Summer edition. pp. 23-27
38. Chang AT, Boots RJ, Brown MG, et al. Ventilatory changes following head-up tilt and standing in healthy subjects. *Eur J Appl Physiol*. 2005;95(5-6):409-17
41. Collings N, Cusack R. A repeated measures, randomized cross-over trial, comparing the acute exercise response between passive and active sitting in critically ill patients. *BMC Anesthesiol* 2015;15:1
42. Gillick BT, Marshall WJ, Rheault W, Stoecker J. Mobility criteria for upright sitting with patients in the neuro/trauma intensive care unit: an analysis of length of stay and functional outcomes. *Neurohospitalist* 2011; 1: 172-177.
43. Zafiroopoulos B, Alison JA, McCarren B. Physiological responses to the early mobilisation of the intubated, ventilated abdominal surgery patient. *Aust J Physiother* 2004; 50: 95-100.
44. Weissman C, Kemper M. Stressing the critically ill patient: the cardiopulmonary and metabolic responses to an acute increase in oxygen consumption. *J Crit Care* 1993; 8: 100-108.
45. Parry S and Puthuchery Z. The impact of extended bed rest on the musculoskeletal system in the critical care environment. *Extreme Physiology and Medicine*. 2015; 4(16)



This is an extract from the Arjo "Clinical Evidence Summary ICU Early Mobility Solutions" Brochure

www.arjo.com

Sitting out of bed

The change to an upright position challenges both the cardiovascular and respiratory systems. Earlier work has demonstrated that critically ill, mechanically ventilated patients show a positive response to exercise and increased activity in respiratory and cardiovascular parameters^{43,44}. This suggests that patients within critical care may benefit from the effects of training, albeit in a modified way to meet their current levels of physical capacity and reserve.

Following an extended stay on the ICU, patients are likely to experience the equivalent response to vigorous exercise (i.e. an increase in heart rate and respiratory rate) at even low levels of activity, such as moving from lying to sitting or completing activities of daily living such as washing. This is due to an overall reduction in the oxidative capacity of muscle⁴⁵. This suggests that having a robust and consistent structure for rehabilitation is equally important in the preceding days / weeks in order to support ongoing recovery.

Benefit of sitting on edge of bed

- Increased functional residual capacity³⁸
- Challenges the trunk and allows assessment of static and dynamic sitting balance³⁵
- Less supportive / more physically demanding position promotes a cardiorespiratory response⁴¹
- Provides neurological stimulus to aid waking and reorientation⁴²
- Positive psychological benefits of commencing rehabilitation for patient and family



Benefit of sitting out of bed



Increased functional residual capacity³⁸



Chair provides support to the trunk so less demanding from a respiratory point of view than edge of bed sitting⁴¹



Upright posture challenges cardiovascular system and provides orthostatic stimulus³⁵



Provides neurological stimulus to aid waking and reorientation⁴²



Positive psychological benefits of being out of bed

When sitting on edge of bed is too challenging

The process of sitting on the edge of the bed can at times be labour intensive, particularly for patients who are obese, of low arousal or with profound ICU-AW, where it may take four or even five members of staff to transfer the patient to the edge of the bed. Alternatively, factors such as a poorly tolerated airway, multiple attachments including positional femoral lines, low dose inotropic support, postural hypotension may raise safety concerns around the process of moving a patient to sitting on the edge of the bed.

A recent study evaluating the impact of the introduction of the Sara Combilizer demonstrated a significant reduction in time taken to mobilise for patients ventilated ≥ 5 days⁴⁶. This corresponded with significantly higher SOFA scores at the point of mobilisation in the Sara Combilizer group, suggesting patients were also mobilising at a more acute stage of their illness / in a higher degree of organ failure.

In these instances the Sara Combilizer, a multi-position aid, can provide an ideal solution. Due to the controlled and passive nature of the transfer and the more gradual change to a sitting or standing position, the Sara Combilizer provides a safe and controlled method of assessing or mobilising these patients. In these early stages length of sitting or standing time should be limited to prevent the patient becoming overly fatigued.

- Safe transfer of high risk patients
- Less burden to staff⁴³
- Controlled verticalisation helps to ameliorate impact of orthostatic stresses³⁴
- Tilt in space feature allows supportive and safe seating positions to be achieved, even in those patients with low arousal or profound weakness



The introduction of the Sara Combilizer was associated with a significant reduction in time to first mobilise⁴⁶

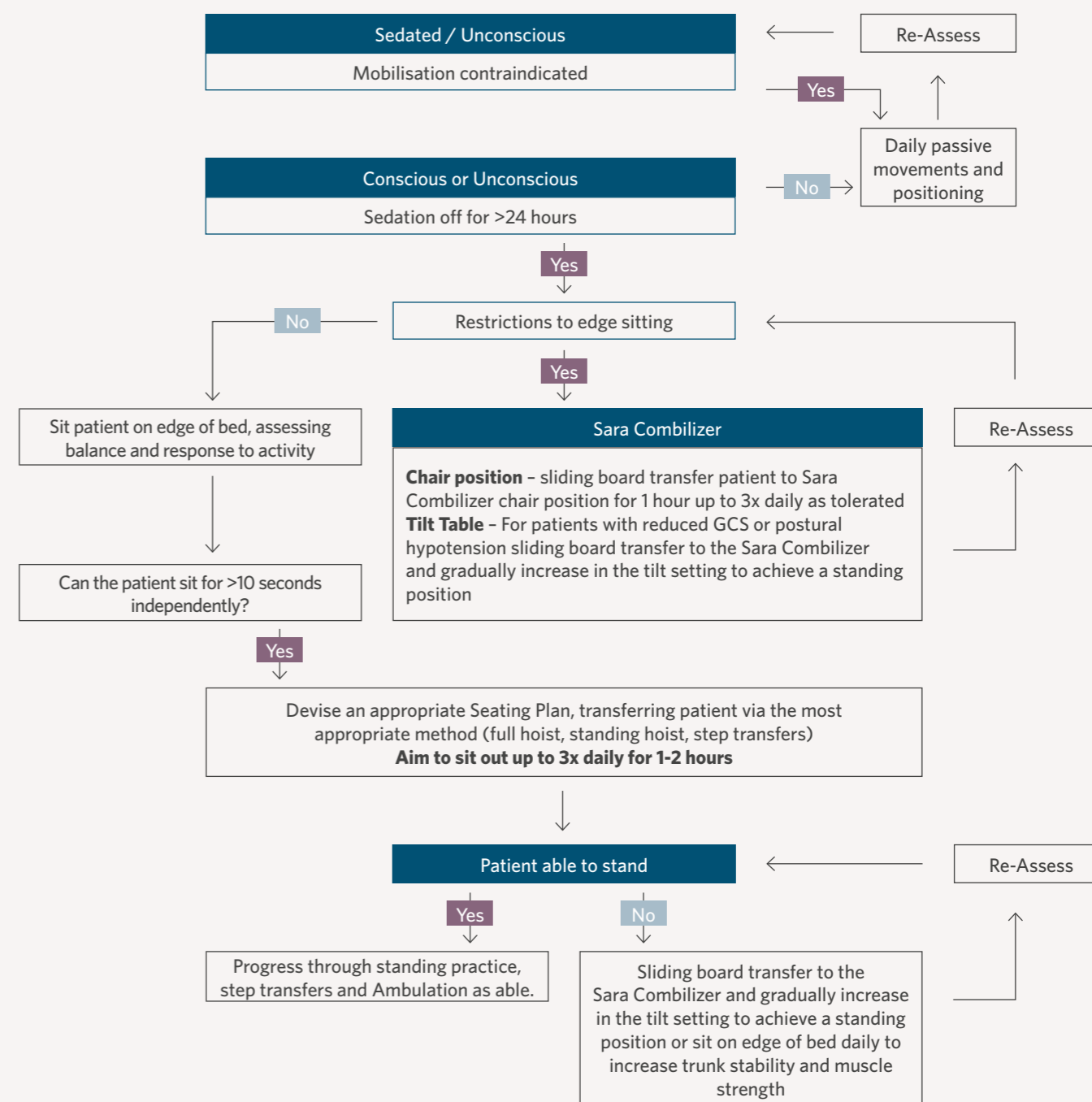
The Sara Combilizer allowed safe mobilisation of patients at a more acute phase of their illness⁴⁶

Evidence Summary

Author	Study	Design	Key Findings
McWilliams et al, 2017 ⁴⁶	Prospective before and after study Multi specialty ICU	80 patients mechanically ventilated for ≥ 5 days Sara Combilizer introduced coupled with training for staff and protocol for use	Reduced time to first mobilise by 3 days Patients were mobilised at a more acute phase of illness with no adverse events

This is an extract from the Arjo "Clinical Evidence Summary ICU Early Mobility Solutions" Brochure
www.arjo.com

Sara Combilizer early and structured mobility protocol



References
34. Hodgson CL, Stiller K, Needham DM, et al. Expert consensus and recommendations on safety criteria for active mobilisation of mechanically ventilated critically ill adults. *Critical Care* 2014; 18:658: 1-9
43. Zafropoulos B, Alison JA, McCarren B. Physiological responses to the early mobilisation of the intubated, ventilated abdominal surgery patient. *Aust J Physiother* 2004; 50: 95-100.
44. Weissman C, Kemper M. Stressing the critically ill patient: the cardiopulmonary and metabolic responses to an acute increase in oxygen consumption. *J Crit Care* 1993; 8: 100-108.
46. McWilliams, D., Atkins, G., Hodson, J., Snelson, C. The Sara Combilizer as an early mobilisation aid for critically ill patients: A prospective before and after study. *Australian Critical Care*. 2017; 30(4): 189-195